

# Data Display Cubes

VS-50XL21U | VS-67XL21U | VS-50XLW20U | VS-67XLW20U

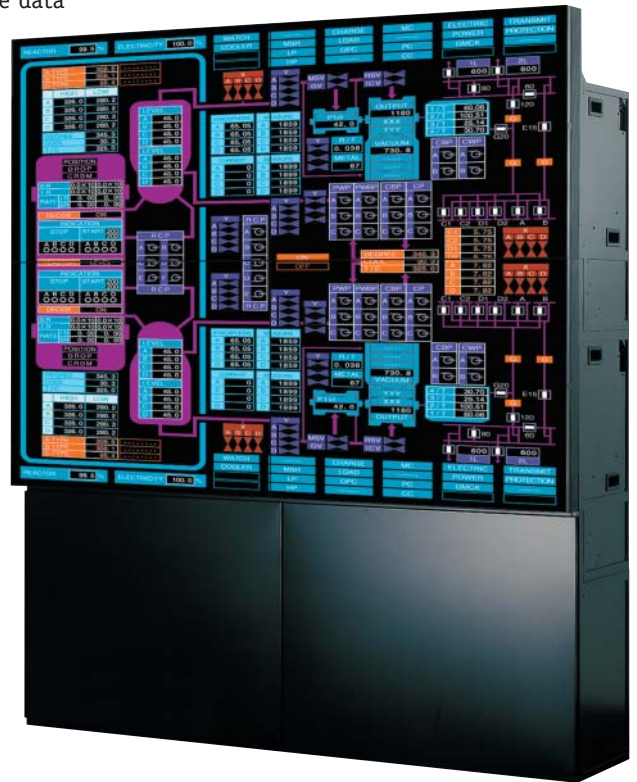
XGA Rear Access Data Display Cubes



Mitsubishi's line of 50- and 67-inch high-resolution MegaView Wall rear-access data displays include a proprietary suite of advanced features and functions that result in a display image that is sharper, brighter and more reliable than ever before.

When non-stop monitoring is critical, Mitsubishi's XL MegaView Wall rear-access models are the preferred choice of system integrators. The entire line is equipped with Mitsubishi's first Smart Lamp™ and Smart Colorwheel™ features. Each display wall cube stores its own color characteristics. When a lamp or colorwheel is replaced, this function is then activated, retrieves the data from the display wall cube, and performs a re-calibration of the color adjustments, bringing all of the cubes into perfect color balance. In addition, the VS-50XLW20U and VS-67XLW20U are equipped with an exclusive lamp changer device. The cube is able to sense a complete lamp failure or degeneration in brightness of a percentage that the user chooses and automatically switches to a new lamp.

- True XGA, high resolution imagery
- Compact, fully modular and stackable
- Digital Color Space Control (CSC) enables optimal color blending between screens in tiled applications
- Natural color matrix which produces superb color reproduction and superior picture quality
- Smart Lamp and Smart Colorwheel
- Exclusive lamp changer (VS-50XLW20U and VS-67XLW20U)
- Two modes of brightness for optimum viewing
- Comprehensive warranty and toll-free technical support



*Mitsubishi Quality With Proven Reliability*



# Data DisplayCubes

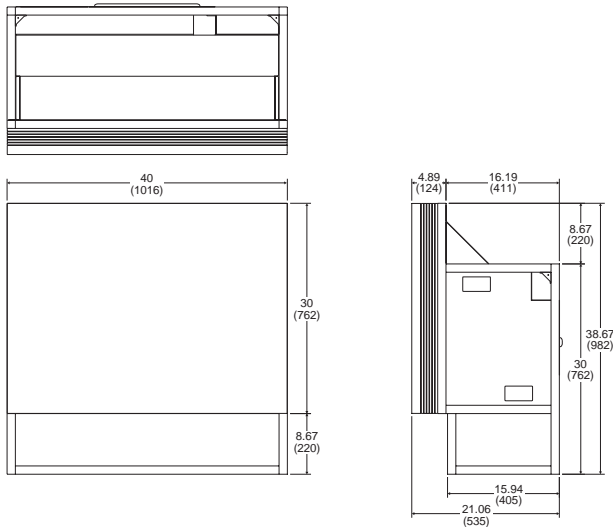
VS-50XL21U | VS-67XL21U | VS-50XLW20U | VS-67XLW20U

XGA Rear Access Data Display Cubes

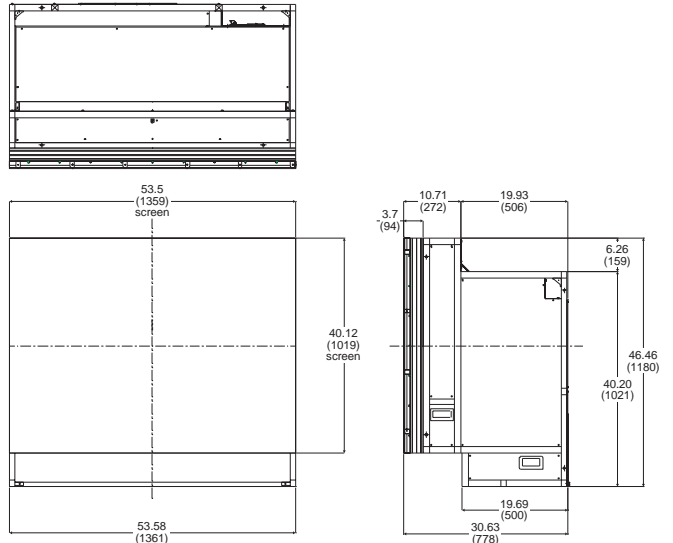


SPECIFICATIONS	VS-50XL21U Standard Cube	VS-50XLW20U Lamp Changer Cube	VS-67XL21U Standard Cube	VS-67XLW20U Lamp Changer Cube
Display Technology	DLP (0.7", 12" DMD single chip)			
Screen Size	50" diagonal viewable (1270 mm)	50" diagonal viewable (1270 mm)	67" diagonal viewable (1701 mm)	67" diagonal viewable (1701 mm)
Resolution	1024 x 768 pixels (XGA)			
Signal Input Terminal	Analog RGB: 5BNC (RGBHV) x 1; Digital RGB: DVI-D x 1			
RGB Input Scanning Frequency	Horizontal: 31.5 - 64.0 kHz; Vertical: 49 - 61 Hz			
Pixel Clock Rate	25 - 115 MHz			
Analog RGB Input Signal	5 BNC (RGBHV) x1; Video: 0.7V <sub>p-p</sub> positive/75Ω; Synchronous: TTL level (positive/negative), High Level: 2.5-5.0V; Low Level: 0-0.5V; Sync On Green: Video: 0.7V <sub>p-p</sub> positive; Synchronous: 0.3V <sub>p-p</sub> negative			
Digital RGB Input Signal	TMDS (DVI-D x1)			
Control Signal Input	RS-232C: D-Sub 9 pins; D-Sub 9 pins x 2 (input, output) Mitsubishi original control link; Wired Remote: F3.5 Jack; IR Receiver			
Lamp	Ultra-high pressure mercury lamp 100W/120W (VS-50XLW20U and VS-67XLW20U- 2 lamps)			
Brightness	Bright: 1000 cd/m <sup>2</sup> (typical); 292 ft.-L (typical); Normal: 800 cd/m <sup>2</sup> (typical); 234 ft.-L (typical)	Bright: 1000 cd/m <sup>2</sup> (typical); 292 ft.-L (typical); Normal: 800 cd/m <sup>2</sup> (typical); 234 ft.-L (typical)	Bright: 500 cd/m <sup>2</sup> (typical); 146 ft.-L (typical); Normal: 400 cd/m <sup>2</sup> (typical); 117 ft.-L (typical)	Bright: 500 cd/m <sup>2</sup> (typical); 146 ft.-L (typical); Normal: 400 cd/m <sup>2</sup> (typical); 117 ft.-L (typical)
Light Output	Bright: 700 ANSI Lumens; Normal: 560 ANSI Lumens			
Contrast Ratio	1300:1 (typical)			
Viewing Angle	Horizontal: ± 60°; Vertical: ± 25° (typical)			
Mullion size	<1 mm (typ.)	<1 mm (typ.)	<2 mm (typ.)	<2 mm (typ.)
Voltage Range	AC 100-240V ±10%, 50/60Hz ±1 Hz			
Power Consumption	195/195W			
Dimensions (W x H x D)	40 x 38.7 x 21.1" (1016 x 982 x 535 mm)	40 x 38.7 x 21.1" (1016 x 982 x 535 mm)	53.6 x 46.5 x 30.6" (1361 x 1180 x 778 mm)	53.6 x 46.5 x 30.6" (1361 x 1180 x 778 mm)
Weight	130 lbs. (59 kg)	136.7 lbs. (62 kg)	201 lbs. (91 kg)	206 lbs. (94 kg)
Temperature and Humidity	Condition at Operation: 50-95°F; (10-35°C) 20-80% non-condensing Condition at Storage: -4-122°F; (-20-50°C) 20-80% non-condensing			
Safety Approval	UL60950, CSA22.2 No.60950, EN60950, Approved by UL			
EMC	FCC part 15 Class A, Industry Canada Class A, EN55022 Class A, EN55024, EN61000-3-2, EN61000-3-3			

External Dimensions Unit: Inches (mm) Models VS-50XL21U and VS-50XLW20U



External Dimensions Unit: Inches (mm) Model VS-67XL21U and VS-67XLW20U



©2005 Mitsubishi Digital Electronics America, Inc. Standard features, options and specifications subject to change without notice. Digital Light Processing™ (DLP™) and Digital Micromirror Device™ (DMD™) are registered trademarks of Texas Instruments Corporation. All other trademarks or registered trademarks are the property of their respective holders.

Printed on 50% recycled paper including 20% post-consumer fibers.

**Mitsubishi Digital Electronics America, Inc.**

Presentation Products Division, 9351 Jeronimo Road, Irvine, CA 92618  
Toll Free: 888-307-0349 | www.mitsubishi-megaview.com

Technical Support: Toll Free: 888-307-0309 | Email: tsupport@mdea.com

**Mitsubishi Electric Sales Canada Inc.**

Information Technologies Group, Markham, Ontario  
Phone: 905-475-7728 | www.MitsubishiElectric.ca